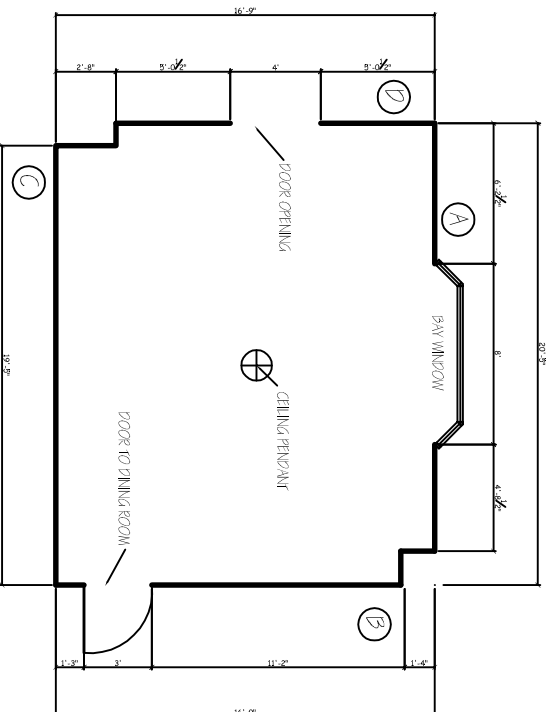
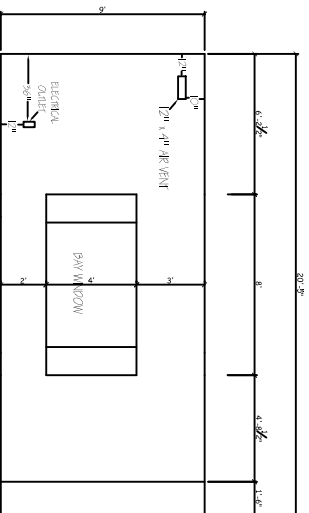


# How To Measure

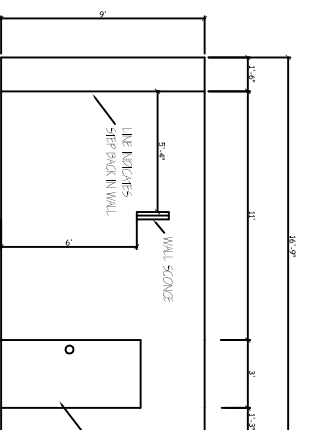


FLOOR PLAN OF LIVING ROOM

Begin with your floor plan, sketch out your room as if you are looking at it from above. Measure each wall, corner to corner, record the sizes and locations of openings, doors, windows, built-ins, fireplaces, etc. Then label each wall a letter to correspond with the elevation drawing you will create next.



ELEVATION OF WALL A



ELEVATION OF WALL B

Sketch out each wall, and draw in the placement of any features on this wall. Measure each window from the floor to the bottom of the sill, then the height of the window, and from the top of the sill to the ceiling. Also include ceiling heights, location of power outlets, height of any windows and doors, location of any wall or ceiling lights. Continue this for all four walls.